



Custom Mosaik

Designer: Artaic

Content: 100% Wool Design Felt + Akustika Substrate (60% post-consumer recycled content)

Tile Size: 1'-0" x 1'-0" (30.5 x 30.5 cm)

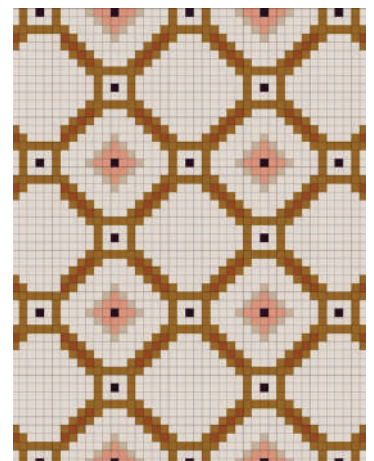
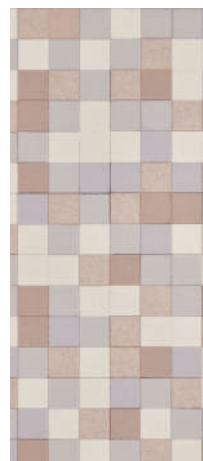
Thickness: 3/4 in (19 mm)

Environmental: 100% Wool Design Felt is 100% biodegradable/ compostable and Akustika 10 contains minimum 60% post-consumer recycled content and is 100% recyclable

Contains no formaldehyde, 100% VOC free, no chemical irritants, and free of harmful substances

100% Wool Design Felt and Akustika 10 contribute to LEED®

Prop 65 Compliant





Checker

Designer: Kelly Harris Smith

Content: 100% Wool Design Felt + Akustika Substrate (60% post-consumer recycled content)

Tile Size: 1'-0" x 1'-0" (30.5 x 30.5 cm)

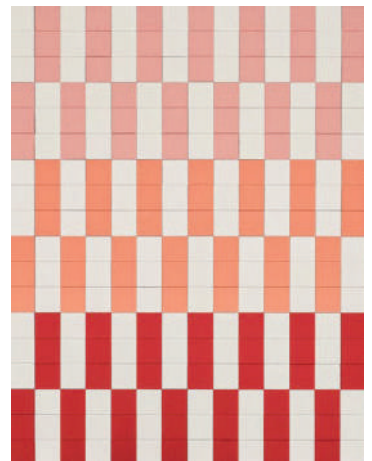
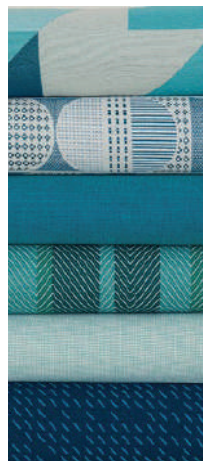
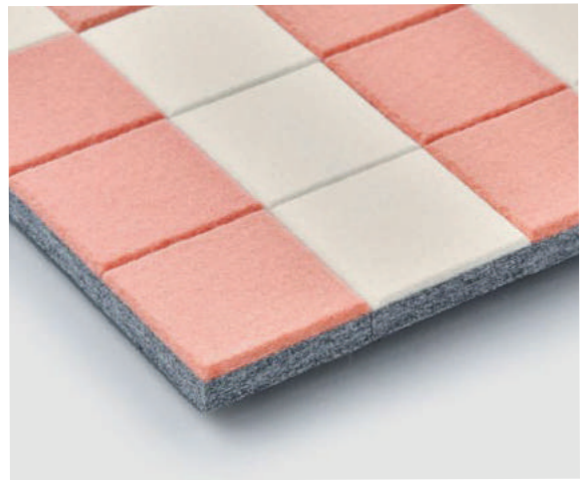
Thickness: 3/4 in (19 mm)

Environmental: 100% Wool Design Felt is 100% biodegradable/compostable and Akustika contains minimum 60% post-consumer recycled content and is 100% recyclable

Contains no formaldehyde, 100% VOC free, no chemical irritants, and free of harmful substances

100% Wool Design Felt and Akustika 10 contribute to LEED®

Prop 65 Compliant





Gingham

Designer: Kelly Harris Smith

Content: 100% Wool Design Felt + Akustika Substrate (60% post-consumer recycled content)

Tile Size: 1'-0" x 1'-0" (30.5 x 30.5 cm)

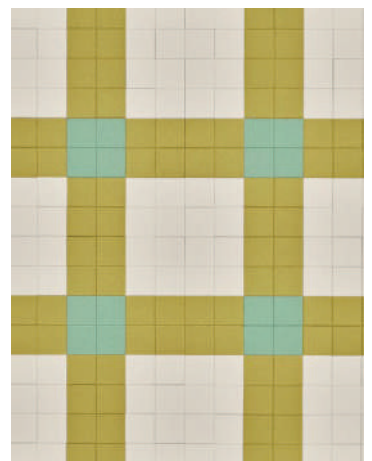
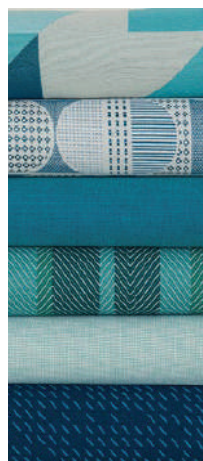
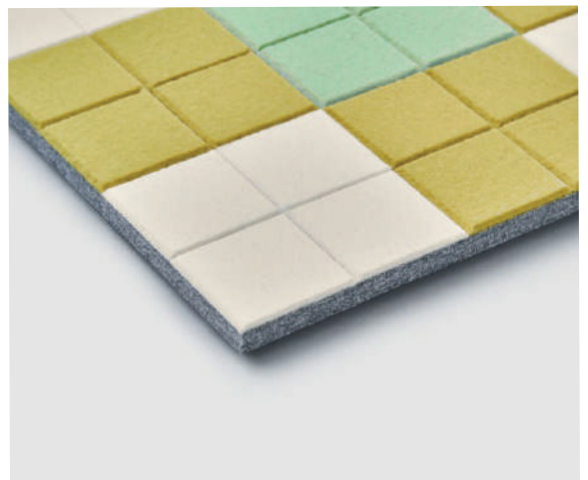
Thickness: 3/4 in (19 mm)

Environmental: 100% Wool Design Felt is 100% biodegradable/compostable and Akustika 10 contains minimum 60% post-consumer recycled content and is 100% recyclable

Contains no formaldehyde, 100% VOC free, no chemical irritants, and free of harmful substances

100% Wool Design Felt and Akustika 10 contribute to LEED®

Prop 65 Compliant





Twill

Designer: Kelly Harris Smith

Content: 100% Wool Design Felt + Akustika Substrate (60% post-consumer recycled content)

Tile Size: 1'-0" x 1'-0" (30.5 x 30.5 cm)

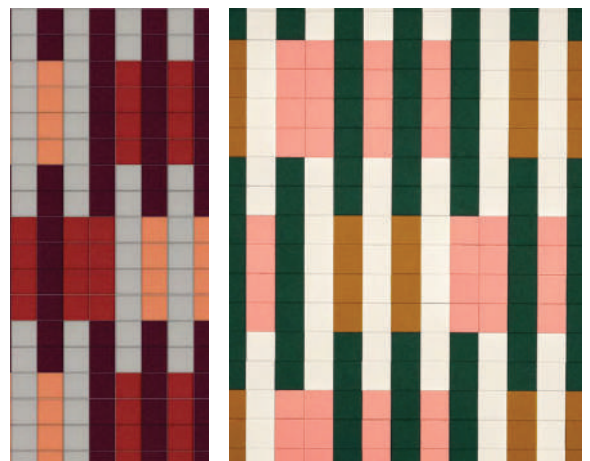
Thickness: 3/4 in (19 mm)

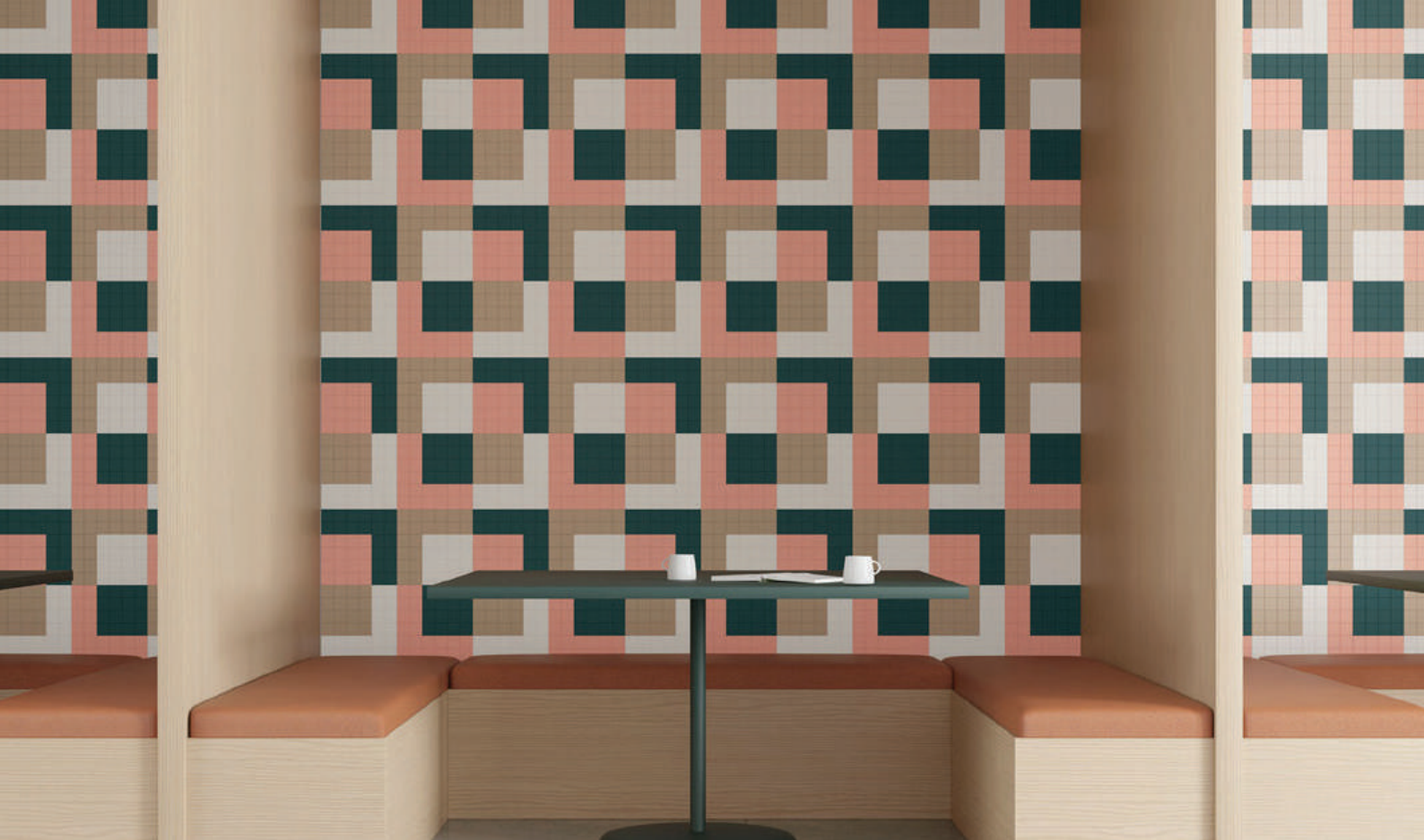
Environmental: 100% Wool Design Felt is 100% biodegradable/compostable and Akustika 10 contains minimum 60% post-consumer recycled content and is 100% recyclable

Contains no formaldehyde, 100% VOC free, no chemical irritants, and free of harmful substances

100% Wool Design Felt and Akustika 10 contribute to LEED®

Prop 65 Compliant





Waffle

Designer: Kelly Harris Smith

Content: 100% Wool Design Felt + Akustika Substrate (60% post-consumer recycled content)

Tile Size: 1'-0" x 1'-0" (30.5 x 30.5 cm)

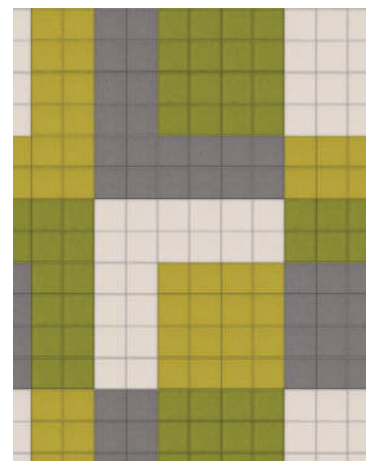
Thickness: 3/4 in (19 mm)

Environmental: 100% Wool Design Felt is 100% biodegradable/ compostable and Akustika 10 contains minimum 60% post-consumer recycled content and is 100% recyclable

Contains no formaldehyde, 100% VOC free, no chemical irritants, and free of harmful substances

100% Wool Design Felt and Akustika 10 contribute to LEED®

Prop 65 Compliant





Weave

Designer: Kelly Harris Smith

Content: 100% Wool Design Felt + Akustika Substrate (60% post-consumer recycled content)

Tile Size: 1'-0" x 1'-0" (30.5 x 30.5 cm)

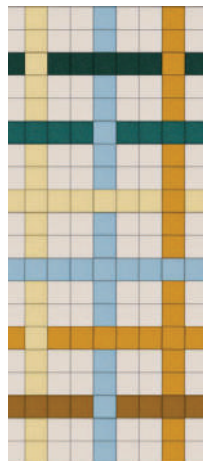
Thickness: 3/4 in (19 mm)

Environmental: 100% Wool Design Felt is 100% biodegradable/compostable and Akustika 10 contains minimum 60% post-consumer recycled content and is 100% recyclable

Contains no formaldehyde, 100% VOC free, no chemical irritants, and free of harmful substances

100% Wool Design Felt and Akustika 10 contribute to LEED®

Prop 65 Compliant





Rise

Designer: Submaterial

Content: 100% Wool Design Felt + Akustika 10 Substrate (60% post-consumer recycled content)

Maximum Panel Size: 2'-10" x 9'-8" (86.4 x 294.6 cm)

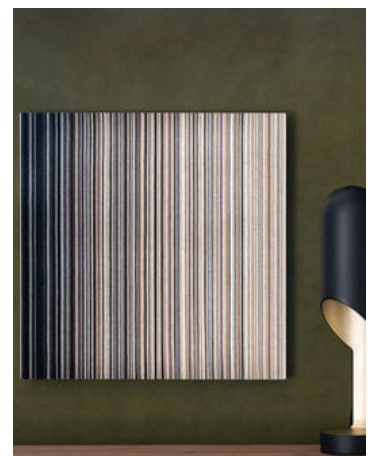
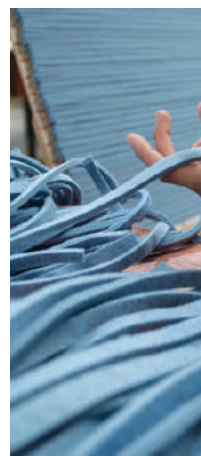
Thickness: 1 1/4 in (32 mm) (includes Z-Clips)

Color Options: 1-Color or 2-Color per wall

Environmental: 100% Wool Design Felt is 100% biodegradable/ compostable and Akustika 10 contains minimum 60% post-consumer recycled content and is 100% recyclable

Contains no formaldehyde, 100% VOC free, no chemical irritants, and free of harmful substances

100% Wool Design Felt and Akustika 10 contribute to LEED®





Reeds

Content: 100% Wool Design Felt + Akustika 10 Substrate (60% post-consumer recycled content)

Groove Options: Akustika Grooves, Felt: Grooves

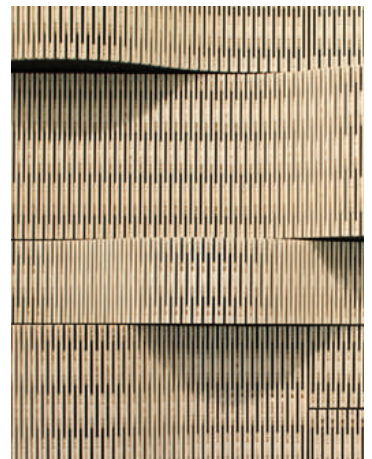
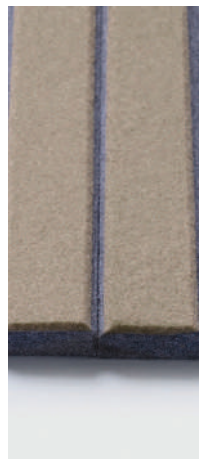
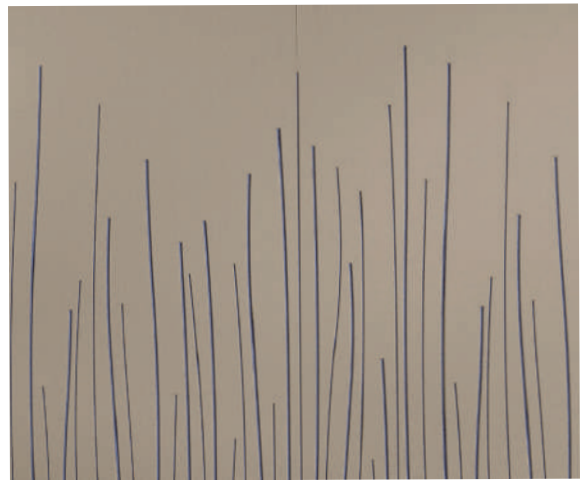
Panel Size: 4'-0" x 9'-8" (121.9 x 294.6 cm)

Thickness: Akustika Grooves: 1/2 in (13 mm), Felt Grooves: 3/4 in (18 mm)

Environmental: 100% Wool Design Felt is 100% biodegradable/compostable and Akustika 10 contains minimum 60% post-consumer recycled content and is 100% recyclable

Contains no formaldehyde, 100% VOC free, no chemical irritants, and free of harmful substances

100% Wool Design Felt and Akustika 10 contribute to LEED®





Akustika 25 Baffle

Content: 100% Wool Design Felt + Akustika 25 Substrate (60% pre-consumer recycled content)

Panel Sizes: Minimum: 1 sq ft (0.09 sq m)

Maximum for Suspended: 4'-0" x 8'-0" (121.9 x 243.8 cm)

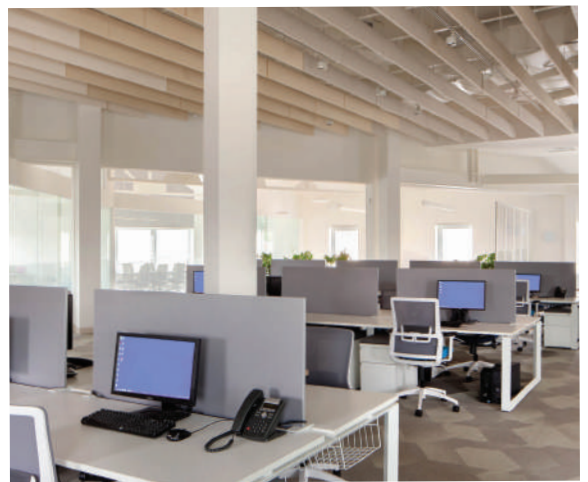
Maximum for Ceiling Mounted: 1'-6" x 8'-0" (45.7 x 243.8 cm)

Thickness: 1 1/4 in (31 mm)

Environmental: 100% Wool Design Felt is 100% biodegradable/compostable and Akustika 25 contains minimum 60% pre-consumer recycled content and is 100% recyclable

Contains no formaldehyde, no chemical irritants, and free of harmful substances

100% Wool Design Felt and Akustika 25 contribute to LEED®





Tide

Designer: Mia Cullin

Content: 100% Wool Design Felt + Akustika 10 Substrate (60% post-consumer recycled content)

Panel Sizes: Approx. 4'-0" x 5'-0" (124.5 x 153.7 cm)

Thickness: 3 1/2 in (8.9 cm)

Environmental: 100% Wool Design Felt is 100% biodegradable/ compostable and Akustika 10 contains minimum 60% post-consumer recycled content and is 100% recyclable

Contains no formaldehyde, no chemical irritants, and free of harmful substances

100% Wool Design Felt and Akustika 10 contribute to LEED®

